



Installation Instructions

Seal Kit

Find additional information online at:

CoolViewThermostat.com

Getting Started

Installing a replacement seal kit is not too difficult: just make sure that the sealing areas are clean. Reference photos in these instructions are for the Chevy/Mopar assemblies, however all units are similar and the same techniques can be used with all units. Please read all instructions before beginning.

Included in the kit:

2 each square O-rings

2 each glass seals

1 each manifold O-ring *(Not used with all units)*

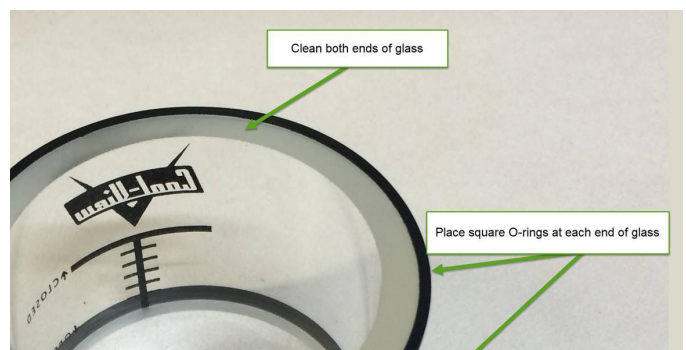
Installation

Installing a replacement seal kit is not too difficult: just make sure that the sealing areas are clean. Reference photos in these instructions are for the Chevy/Mopar assemblies, however all units are similar and the same techniques can be used with all units. Please read all instructions before beginning.

1. With the Cool-View unit removed from the engine remove the end plates from the glass.
2. Completely clean all parts especially making sure all surfaces where the seals go are very clean. Alcohol or lacquer thinner works well for this. Make sure all old adhesive is removed.



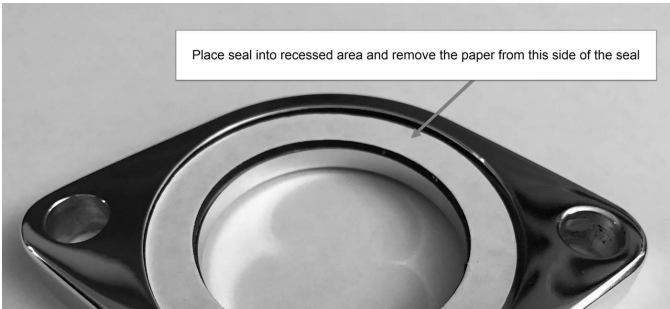
3. Below is a picture of the glass with the centering square O-rings in place. Before installing the glass place these around the glass as shown. Make sure to clean the ends of the glass.



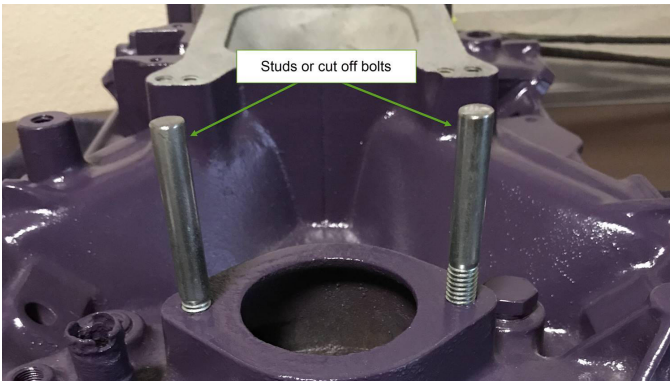
4. The seals come with adhesive already on them that only requires peeling off a paper protector.



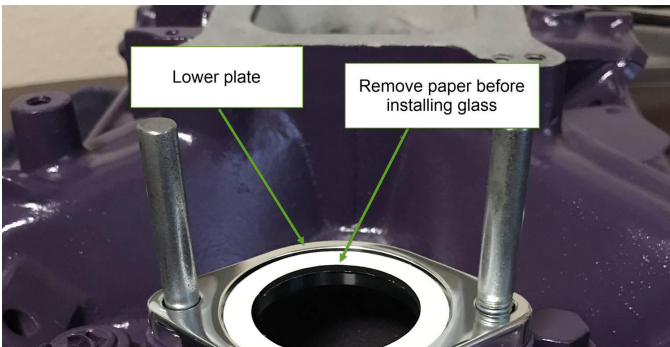
5. Take the paper off of one side of each seal and place the seals in the recessed area of each plate. Then remove the paper from the other side of each seal.



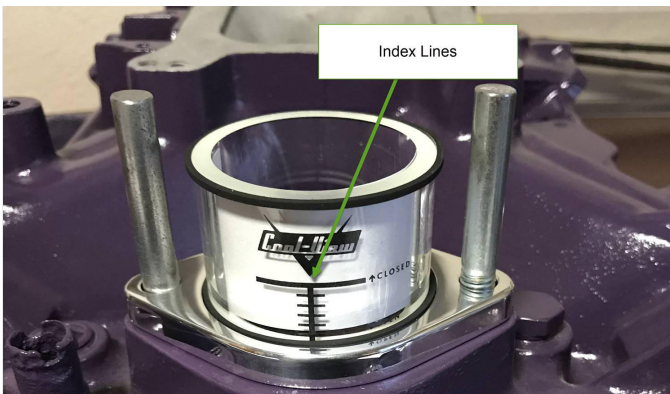
6. Use two studs screwed into the manifold to line up the top plate with the lower plate.



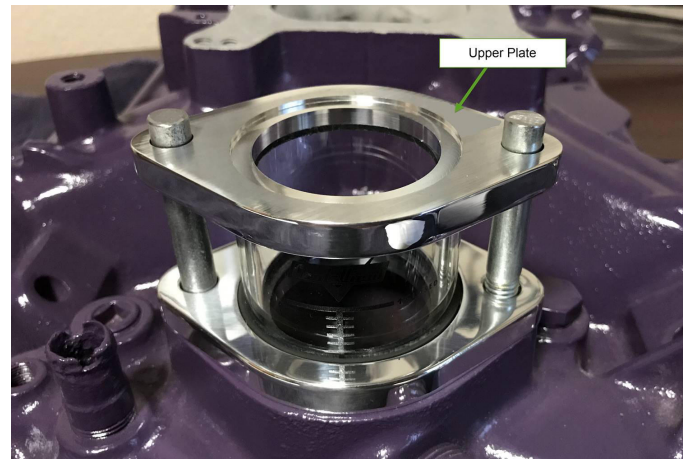
7. Slide the lower plate over the studs.



8. Then install the glass making sure the index lines are where you want them. Once you place the glass on the seal you may not be able to move it. The adhesive on the seals is very sticky.



9. Next slide the upper plate over the studs and onto the glass. Don't forget to remove the paper from the seal first.



10. You are now ready to reinstall the unit on the engine. Follow the installation instructions for your model of Cool-View unit. If you don't have these instructions they can be found on our web page at CoolViewThermostat.com